



Southeast States Equipment Management Conference

Fleet Replacement Modeling North Carolina Department of Transportation

Drew Harbinson, Director of Fleet and Material Management
Newell Brooks, Auxiliary Programs Manager
June 12, 2011



Overview of NC Department of Transportation East Carolina Study

- **HISTORY OF FLEET MANAGEMENT STRATEGIC PLAN**
- **FLEET REPLACEMENT MODELING:**
 - FOUR MAIN RESEARCH OBJECTIVES
 - METHODOLOGY USED BY ECU
 - FINDINGS OF THE STUDY
 - RECOMMENDATIONS
 - LESSONS LEARNED FROM THE STUDY





HISTORY OF THE NCDOT STRATEGIC FLEET MANAGEMENT PLAN

- The NCDOT Strategic Fleet Management Plan began in 2003.
 - In 2003 the Department replaced its core financial systems, including the fleet management system.
 - With the new system our ability to track costs and to report on utilization and depreciation rates improved significantly.
 - At the same time, we implemented a reorganization of the Unit's business processes.





HISTORY OF THE NCDOT STRATEGIC FLEET MANAGEMENT PLAN - continued

- First three years of data unusable due to carryover of legacy data and users lack of familiarity with the system.
- By 2006, we were comfortable with the data collected.
- Needed a minimum of 4 years of good data to conduct the equipment replacement modeling study.
- In 2010, the contract with ECU was signed.
- Data from 2006 through 2009 used.





FLEET REPLACEMENT MODELING

- **FOUR MAIN RESEARCH OBJECTIVES:**

- Identify what is an acceptable rate of depreciation for the fleet.
- Identify the optimum disposal point for 6 major class codes of equipment: pickups, single axle dumps, flatbeds, backhoes, motor graders, front end loaders.
- Identify utilization rate that justifies cost of ownership of those 6 class codes.
- Produce an algorithm that could be automated.





FLEET REPLACEMENT MODELING

- **Dataset Inputs # 1:**

Acquisition Value, PM labor costs, Repair labor cost, PM part costs, Repair parts, Cost of fuel, Cost of oil, Cost of tires, and Total Actual Costs.

- **Dataset Inputs # 2:**

Miles (for on road), Operating Hours (for off road), Rent Hours, Available Hours, % Utilization, Year End Date, and Age (Years)





FLEET REPLACEMENT MODELING

- **Dataset Inputs # 3:**

Cost per Mile or hour, Age - rounded (for plotting), Sales Report, Master Data, Upfit, Depreciation Capture.





FLEET REPLACEMENT MODELING

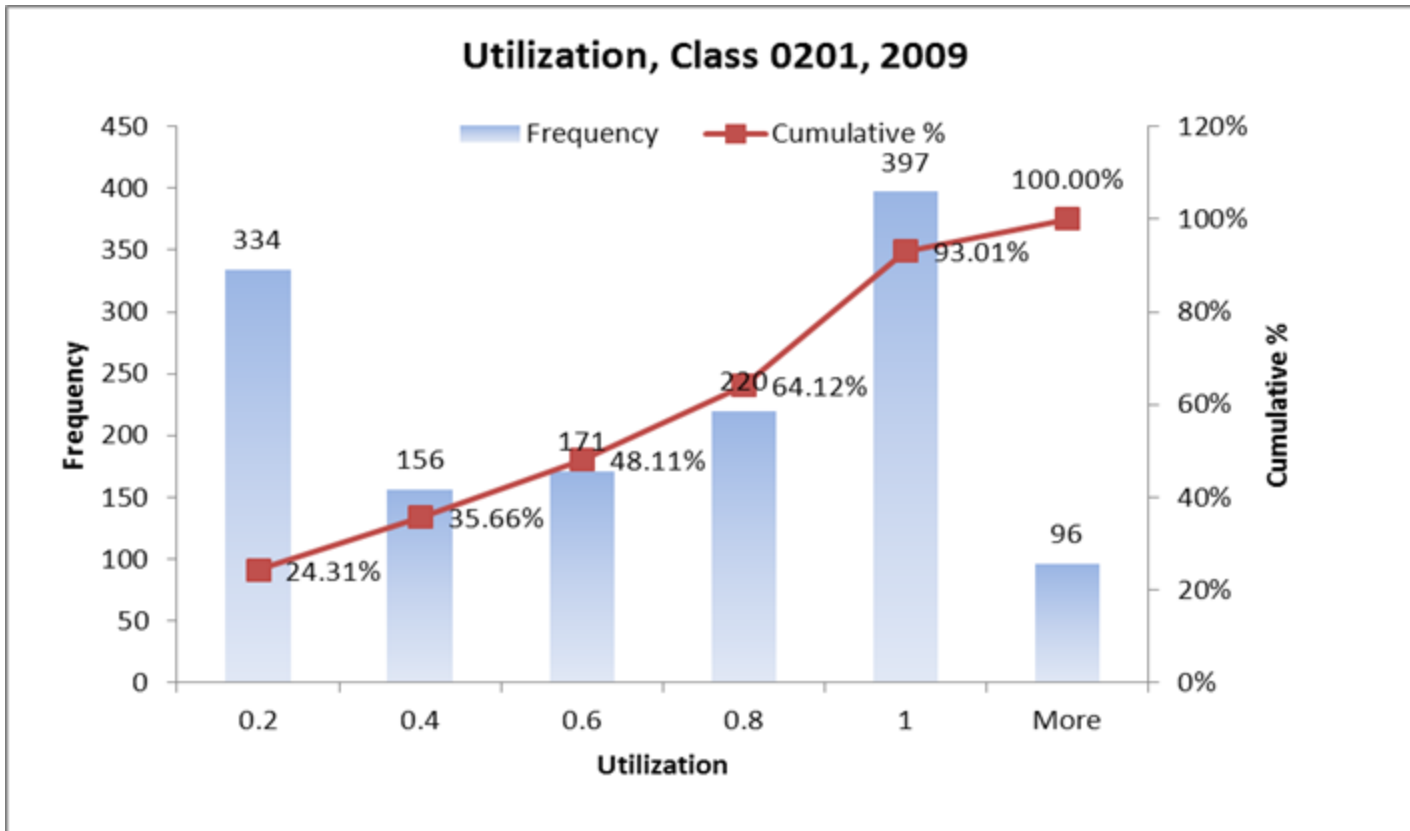
Example Summary Data Table:

- Number of Units
- Average vehicle miles / year
- Total miles
- Average Age of Fleet at Year End
- Average utilization
- Average Cost per Mile



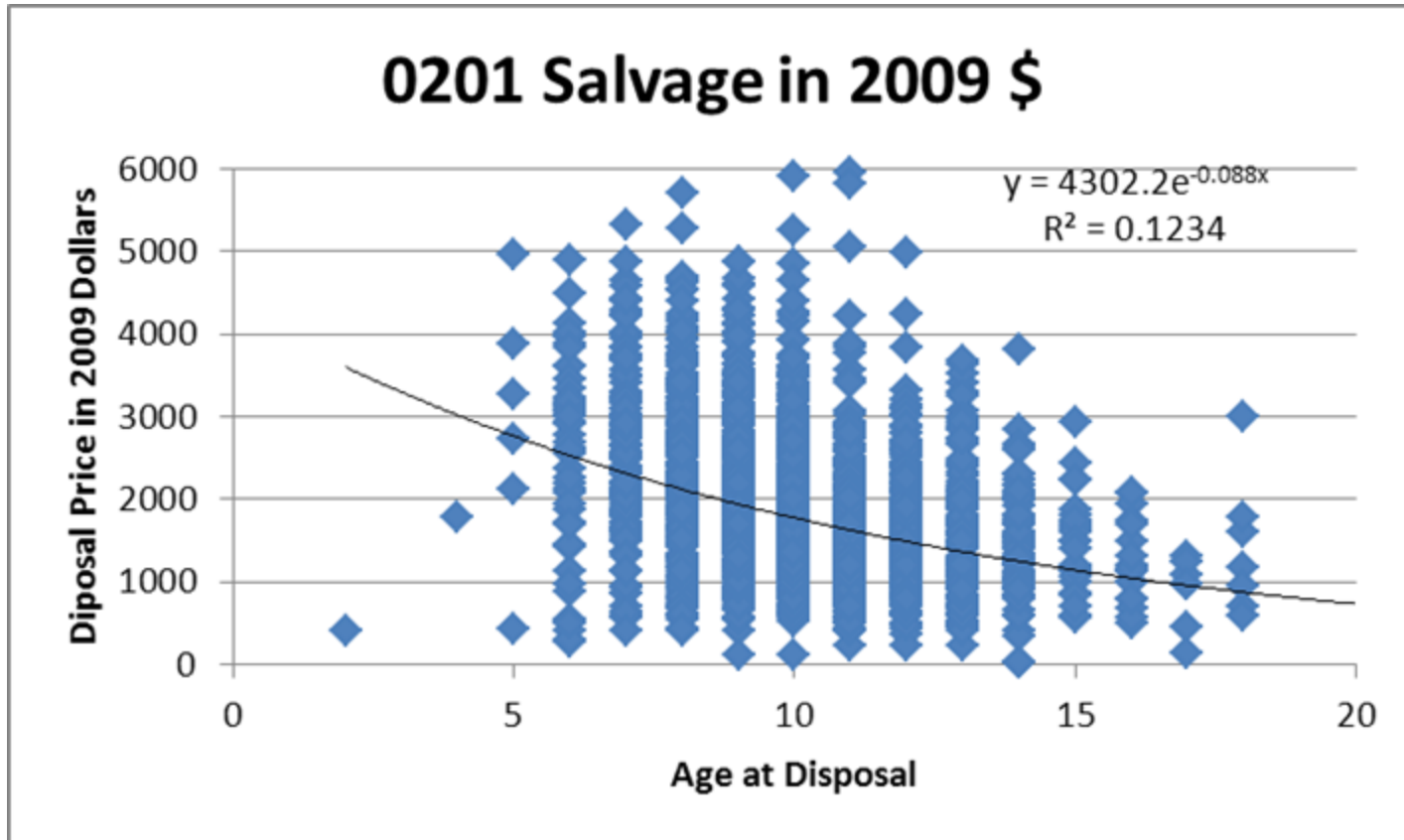


FLEET REPLACEMENT MODELING



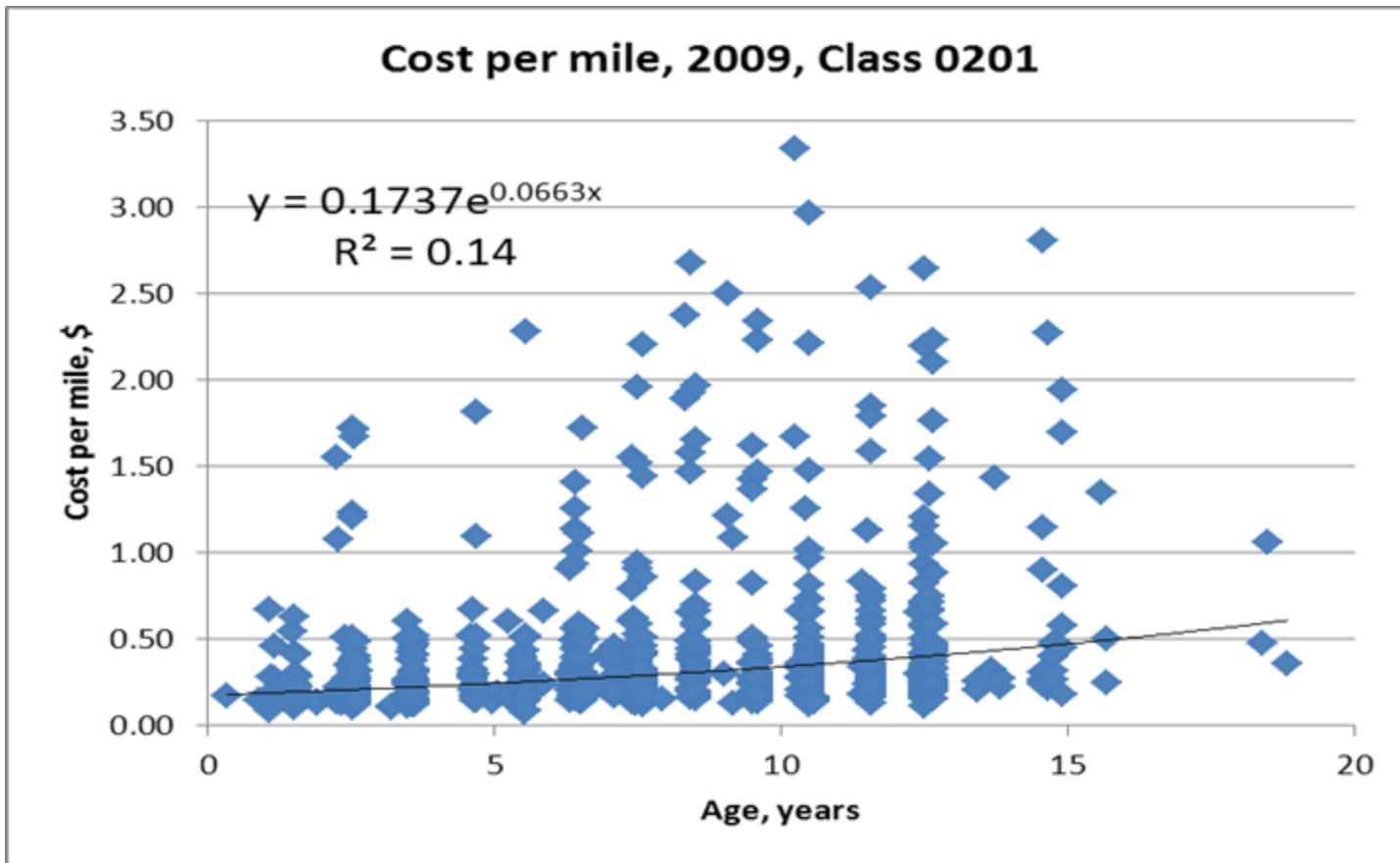


FLEET REPLACEMENT MODELING





FLEET REPLACEMENT MODELING





FLEET REPLACEMENT MODELING

Economic Life Model:

- Year
- Market Value
- Loss in Money Value
- Capital cost of Money Value
- Miles





FLEET REPLACEMENT MODELING

Economic Life Model (cont'd):

- Annual Operating Expense
- Total marginal cost for year
- Percent Value of marginal cost
- Total Percent Value
- Equivalent Uniform Actual Cost (through current year)





FLEET REPLACEMENT MODELING

Utilization Improvement Recommendation

- Class
- Fleet Size this year
- Utilization last year
- Target Fleet Size
- Target Utilization-Composite





FLEET REPLACEMENT MODELING

Pickup/SUV Truck Fleet

<u>Class</u>	<u>2009 Fleet Size</u>	<u>Proposed Size</u>	<u>2008 Utilization</u>	<u>Proposed Utilization Target</u>	<u>Economic Life</u>
0201	1366	1160	63%	75%	8-9 years





FLEET REPLACEMENT MODELING

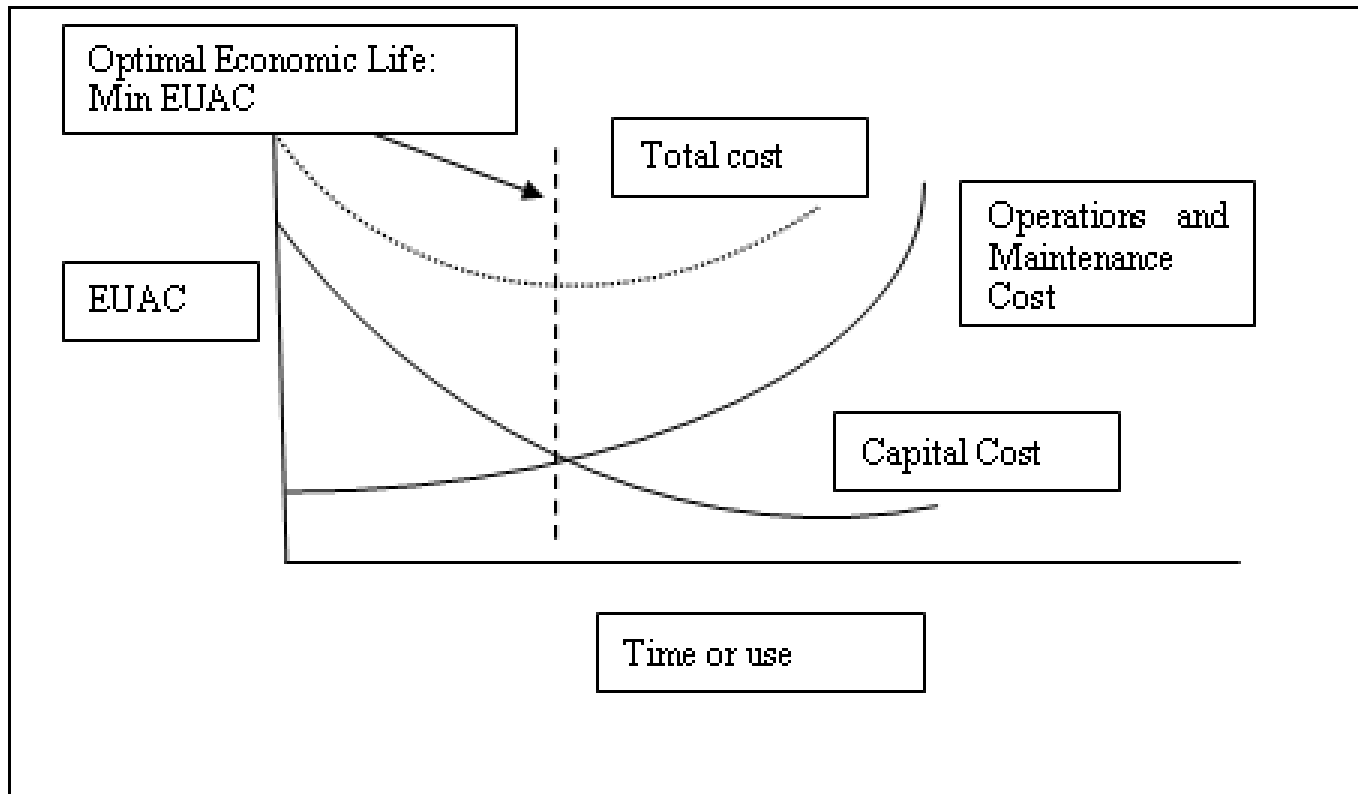
Equivalent Uniform Actual Cost: Existing Asset

- $EUAC \text{ (existing)} = (\text{annual O\&M and related expenses}) + (\text{CR: capital recovery cost})$
- $CR = P (A/P, i\%, n) - S (A/F, i\%, n)$





FLEET REPLACEMENT MODELING





FLEET REPLACEMENT MODELING

Lessons Learned:

Things to do:

- Continuous training on data input; ie. work orders, upfit costs, salvage values, etc.
- Continuous review and analysis of information that is being collected.
- Create and implement clear policies and procedures that provide consistency in reporting.





FLEET REPLACEMENT MODELING

Complete Study Can Be Found At:

<https://apps.dot.state.nc.us/Projects/Research/ProjectInfo.aspx?ID=2361>

FHWA 2010-04

Final Report (pdf)





FLEET REPLACEMENT MODELING

Questions/Comments

